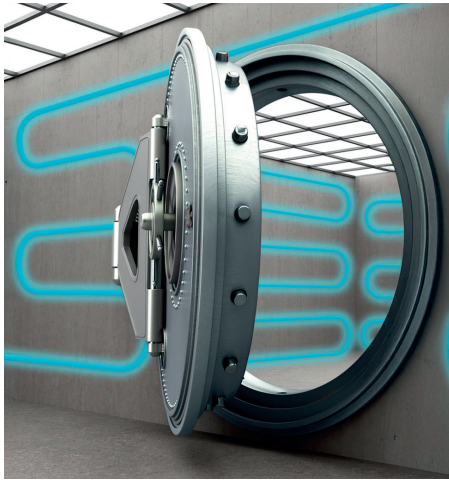


LEOPARD WALL

Perimeter intrusion detection for walls, floors, and ceilings.



What is LEOPARD WALL?

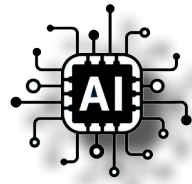
LEOPARD WALL is a sensor-based security system designed to detect intrusions through walls, floors, and ceilings in enclosed areas, protecting against penetration attempts. It is specially developed to safeguard large spaces such as warehouses, vaults, and secured rooms.

LEOPARD WALL is the latest generation of the well-known Leopard perimeter system, incorporating advanced detection capabilities and improved false alarm filtering. The system is capable of learning the behavior of the protected surface. This self-learning ability allows it to detect intrusions with a very low false alarm rate.

LEOPARD WALL is discreet and undetectable. It does not alter the appearance of the protected area, providing a sophisticated and aesthetic security solution.

System Components:

- Fiber optic sensor cable fixed to the surface to be protected
- Control unit responsible for detecting and reporting the intrusion.



How does it work?



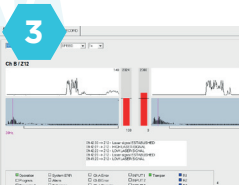

A vibration on the fiber optic sensor cable is detected by the B08X analyzer. The vibration is continuously analyzed in real time using FFT spectral analysis*, and each signal is processed through the system's neural network. When a movement is recognized as an intrusion, the system triggers an ALARM. This ensures high detection reliability with very low false alarm rates.

Why choose LEOPARD WALL?

- › Invisible system — does not reveal its presence or location to the intruder.
- › Immune to EMIs, RFIs, and all electromagnetic phenomena.
- › Learns the behavior of the wall — the longer it operates, the more precise it becomes.
- › Accurate event localization.
- › First line of defense — buys time for response.
- › Active system with continuous self-diagnosis.
- › Easy to install.
- › Backed by over 15 years of experience.
- › Easily integrates with other security systems.
- › Low maintenance and excellent cost-effectiveness.
- › High detection probability.
- › Very few false alarms.
- › Remote support included.



Simple Installation

-  *Attach the sensor cable according to the wall type and layout.*
-  *Install the control unit.*
-  *SConfigure the analyzer with the supplied software.*
-  *Connect the system to the alarm control panel.*

Where to install LEOPARD WALL

- › Vault rooms
- › Jewelry stores
- › Industrial warehouses
- › Shopping centers
- › Supermarkets
- › High-security facilities
- › Museums
- › Explosives storage
- › Military bases
- › VIP residences
- › Other sensitive locations

Analyzer Units.

Up to 800 meters of sensor cable per analyzer (2 zones: 400 + 400 m)..

Models.

B087 - Dual zone, IP and USB connection, 15-48 V + Battery

B087P - Dual zone, IP and USB connection, 15-48 V + PoE

B087P7 - Dual zone, IP, USB connection, 15-48 V + Battery

B083 - Single zone, IP and USB connection, 15-48 V + Battery

**Detectable Events.**

- Wall impacts
- Machine vibration
- High-frequency percussion
- Accumulated mixed events
- Power outage
- Low analyzer battery
- Sensor cable cut (sabotage)
- Tamper alarm
- Digital inputs 1-4 alarm
- System faults or malfunctions

Detection Zones.

1- 2 zones.

Event Localization Accuracy.

100%.

Processor Type.

Next-generation ARM processor with integrat-DSP..

Voltage and Power Consumption.

15-48Vdc. / <5w.

PoE*

48-52v IEEE802.3AT.

Operating Temperature Range.

-40 °C to +75 °C.

Laser Type.

Class III-B.

Auxiliary Inputs.

2-4 digital inputs (depending on model).

Outputs.

2-7 relay contacts, 120VAC / 0.3A (depending on model).

Configuration and Monitoring Interfaces. USB, IP, and RS485 connections.

Power Cut-Off Control.

Supports external 12V battery with monitoring and charging supervision (Accessory: BATT01)

Si, con el software "Leopard Perimeter".

Fiber Optic Sensor Cable**CAO (Standard)**

Multipurpose sensor cable
2x sensing fibers
2x non-sensitive monomode fibers
High mechanical resistance polyamide sheath
Multimode 200/230Qm
Rodent-repellent
Fire-resistant (UNE-EN 50266)

Low halogen content (UNE-EN 50267)
Low smoke emission (UNE-EN 50268)
Also compatible with: **CVO** (single).

**Upgradeable Firmware.**

Yes, even via IP.

Event Memory Storage.

Up to 1,000 events stored.

Auxiliary Units.

R220IP module for remote event monitoring and connection to a Central Alarm Receiving Station (CRA).

Graphical Monitoring Software.

Yes, our software is compatible with: MILESTONE, DESICO, VIDSYS, AVIGILON, ODEKIA, GUNNEBO SMI, LEOPARD CONTROL CENTER, and more...

FFT*: Fast Fourier Transform - mathematical operation for analyzing the frequency spectrum of an electrical wave.

PoE*: Power Over Ethernet - RJ45 connection that provides both data and electrical power via the Ethernet port..

Request a demo or personalized quote today.

