

LEOPARD FENCE 2022

NEW Fiber Optic Intrusion Detection System with FFT signal analysis.



What is LEOPARD FENCE?

It is a sophisticated security system for outdoor use that turns your metal fence into an intruder sensor, it is mounted on your own fence and is oriented towards security applications, it can discriminate different intrusion events (climbing, cuts, ...).

LEOPARD FENCE 2022 is also capable of detecting events in 2 zones of the traced sensor cable, making its installation more profitable for large areas.

LEOPARD FENCE 2022 is the new version of the known Leopard perimeter system, it incorporates new detection and false alarm filtering capabilities..

How does it work?.

A vibration in the fiber optic sensor cable is detected by the V05X analyzer. When any movement exceeds the established resting conditions, a real-time FFT spectral analysis is performed, and when this movement is identified and located, the alarm is triggered. All this ensures a high probability of detection with a very low false alarm rate.

Types of Fences.

It is easily attached to most types of fences (chain link, welded, etc).

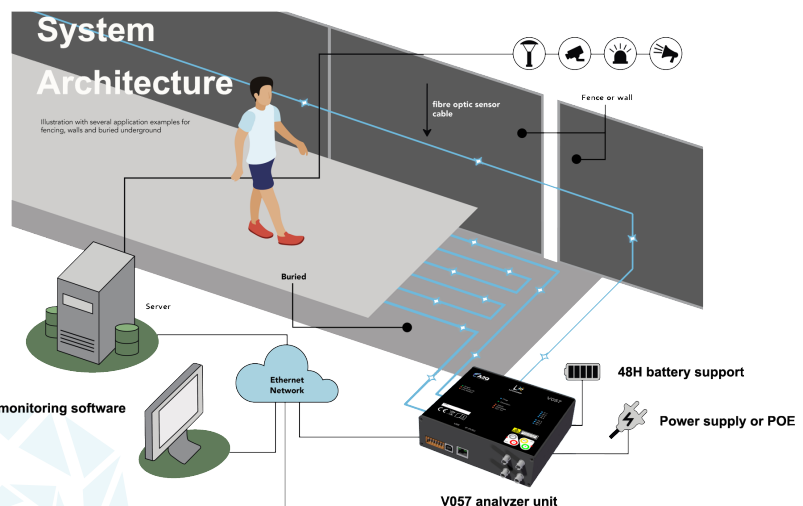
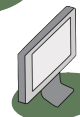
Why to use LEOPARD intrusion detection system?.

- ▶ It is immune to EMIs and RFIs and all electromagnetic phenomena.
- ▶ Accurate event location.
- ▶ Closed system that is not affected by environmental factors (fog, humidity, light, sound, etc...).
- ▶ Active system that constantly self-checks for optimal functioning.
- ▶ Extensive experience (over 15 years).
- ▶ Easy to install.
- ▶ Easy to integrate with other security systems.
- ▶ Low maintenance and Cost Effective System.
- ▶ High POD, Low NAR..
- ▶ Very few false alarms.
- ▶ Remote assistance included in installation.

R220IP Relay unit



SCANLEO monitoring software



Where to install LEOPARD FENCE?.

- ▶ Airports
- ▶ Industrial sites
- ▶ Nuclear power plants
- ▶ Logistic Centers
- ▶ Weapon Depots
- ▶ Military bases
- ▶ Borders
- ▶ Prisons
- ▶ VIP residences
- ▶ Solar Farms
- ▶ Communication sites
- ▶ Other...

Main analysis hardware.

Controls up to 800m of sensitive cable length in two zones 400+400.

Models.

V057	Dual zone IP & USB. 15-48V + battery support.
V057P	Dual zone IP & USB. 15-48V + POE supply.
V057C	Dual zone IP & USB & RS485. 15-48V + battery support
V053	Single zone IP & USB. 15-48V + battery support
V053P	Single zone IP & USB. 15-48V + POE supply.

**Detected events.**

- Cuts in fencing.
- Jump or slide under fencing.
- Blows to fencing.
- Accumulation of mixed events.
- Radial saw cut.
- Cutting of the electrical supply.
- Low battery analyzer.
- Sensor cable cut (sabotage).
- Equipment tamper alarm.
- Alarm Inputs 1-4.
- System failures.

Sensitive zones.

1- 2 zones.

Event placement reliability.

100%.

Processor kind.

ARM with DSP inside.

Power supply.

15-48Vdc. / <5w.

POE

48-52v IEEE802.3AT.

Working temperature range.

-40 °C a +75 °C.

Laser kind.

Class III-B.

Anemometer.

It is not needed. thanks the FFT analysis.

Auxiliary inputs to gather other alarms.

2-4 (depending on the model).

Local outputs.

2-7 dry relay contacts 120Vac/0,3A. (depending on the model).

Monitoring connections.

USB, IP, RS485.

Power cut control.

Yes, connection of an external 12v battery with charge control and supervision. ("BATT01")

Sensitive optical fiber cable.

CAO
Multipurpose cable.
2u. sensitive fibers.
2u. non sensitive fibers for network or other (monomode).
Polyamide cover.
Sensitive multimode fibers 200/230µm.
Rodents repellent.
Fire resistance (UNE-EN 50266).

Low Halogen (UNE-EN 50267).
Low fire density (UNE-EN 50268).

**Firmware update.**

Yes, even through IP

Analyzer event memory.

1000 events.

Auxiliary units.

R220IP for dry contact remote monitoring.

External software connections.

Yes, our software connects with DESICO, VIDSYS, AVIGILON, ODEKIA, GUN-NEBO SMI, LEOPARD CONTROL CENTER,...

